



# UNITÉ #880 OPTION "B"

2 CHAMBRES

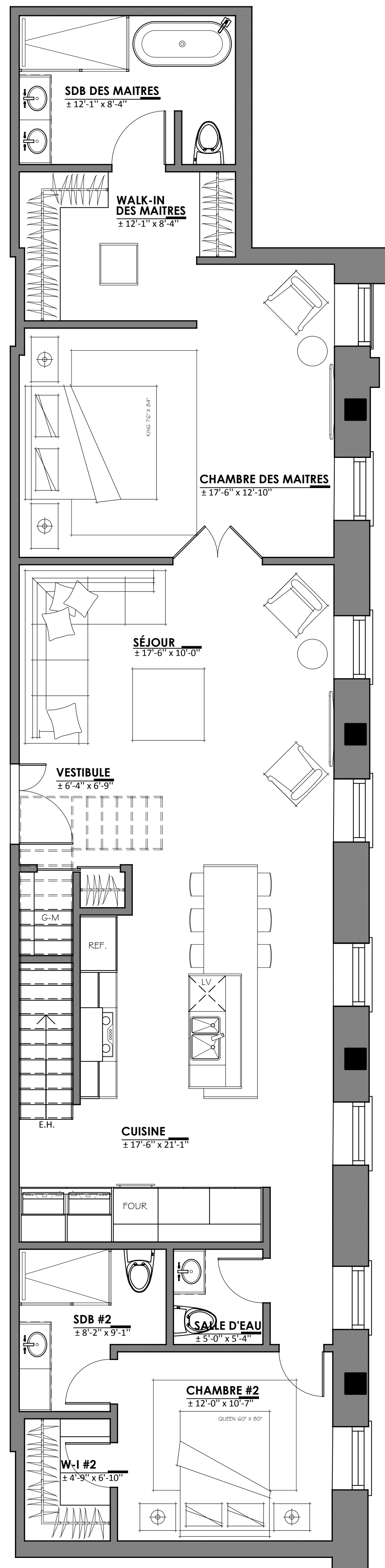
SUPERFICIE: 1606 PI.CA.

APPENTIS: 100 PI.CA.

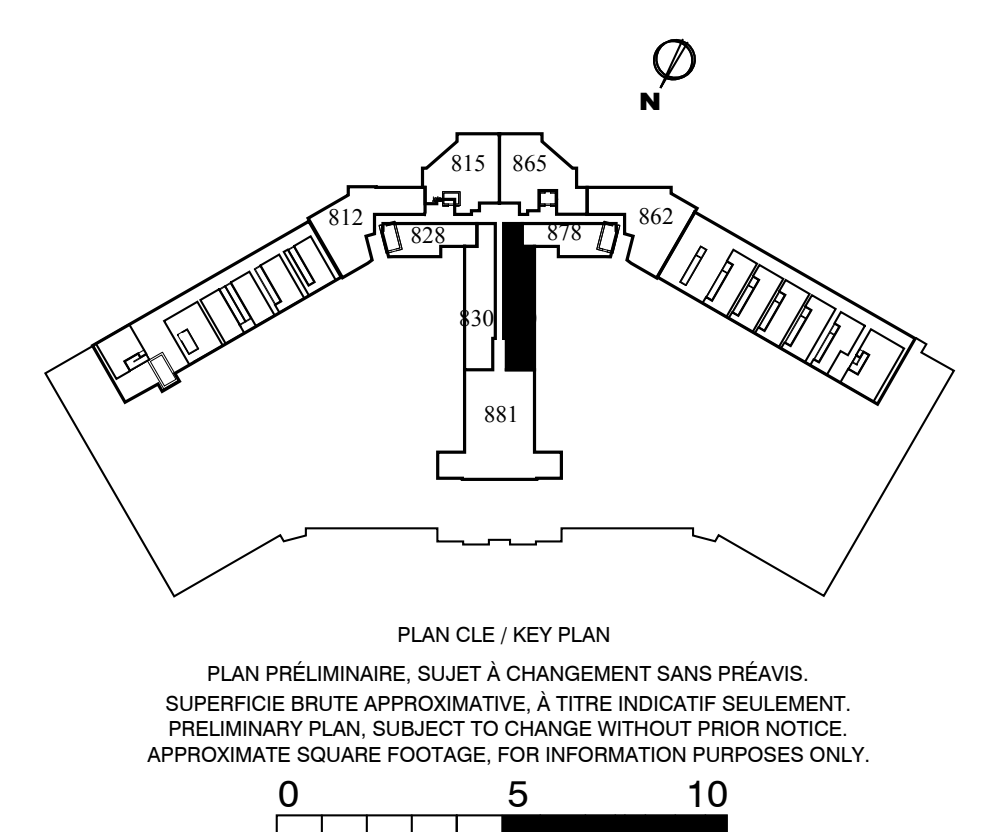
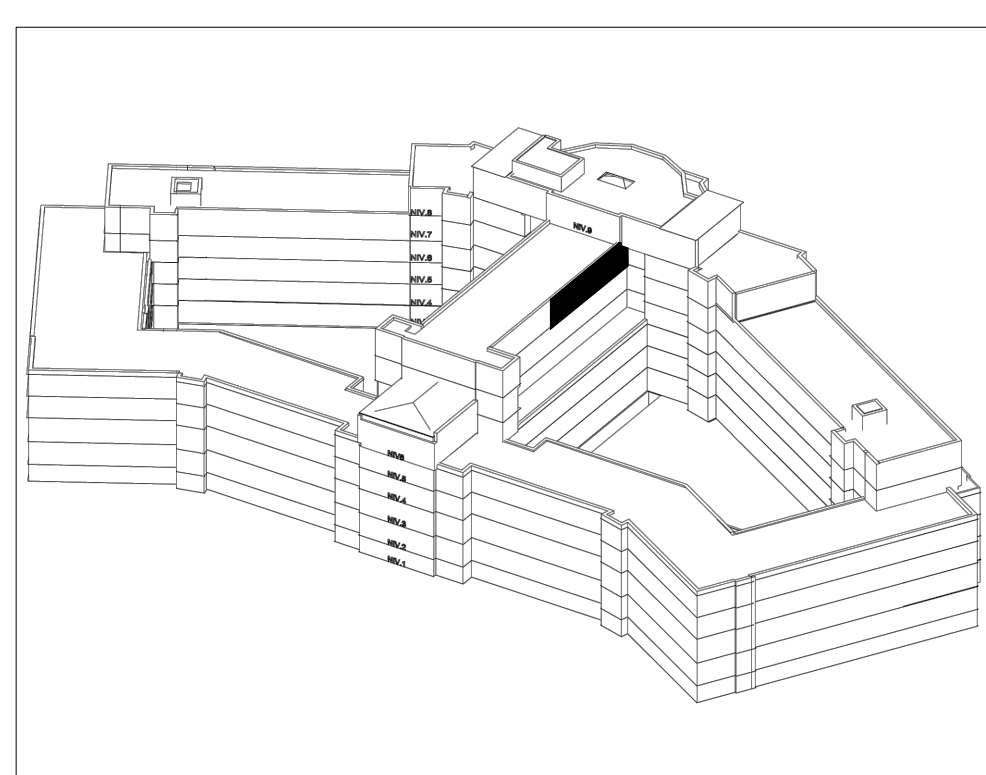
TOTAL: 1706 PI.CA.

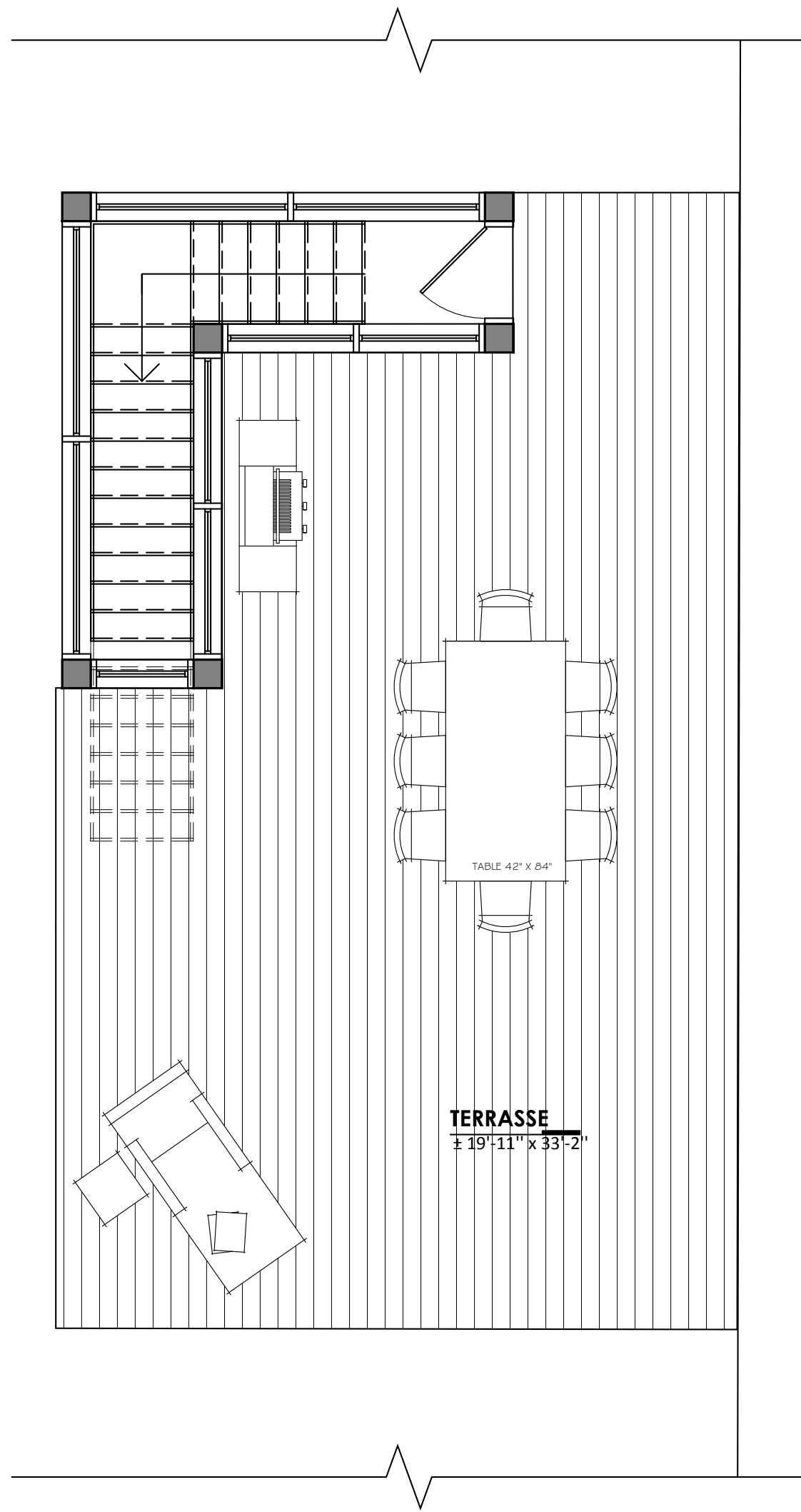
TERRASSE: 550 PI.CA.

GRAND-TOTAL: 2256 PI.CA.



ÉCHELLE: 1/4" = 1'-0"





ÉCHELLE: 1/4" = 1'-0"

