

UNITÉ #755

3 CHAMBRES

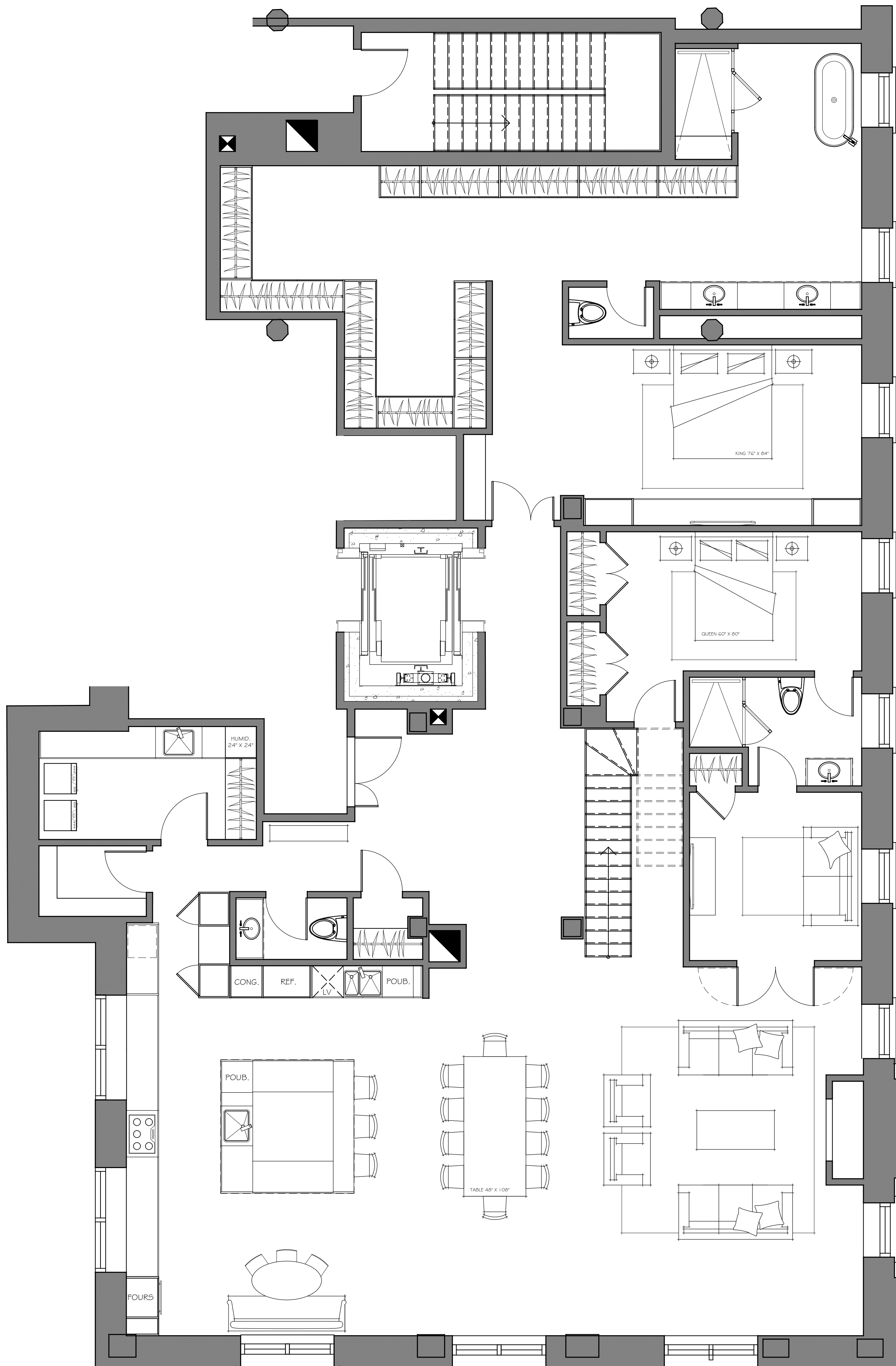
SUPERFICIE: 3543 PI.CA.

APPENTIS: 100 PI.CA.

TOTAL: 3643 PI.CA.

TERRASSE: 1343 PI.CA.

GRAND-TOTAL: 4986 PI.CA.



ÉCHELLE: 1/4" = 1'-0"

