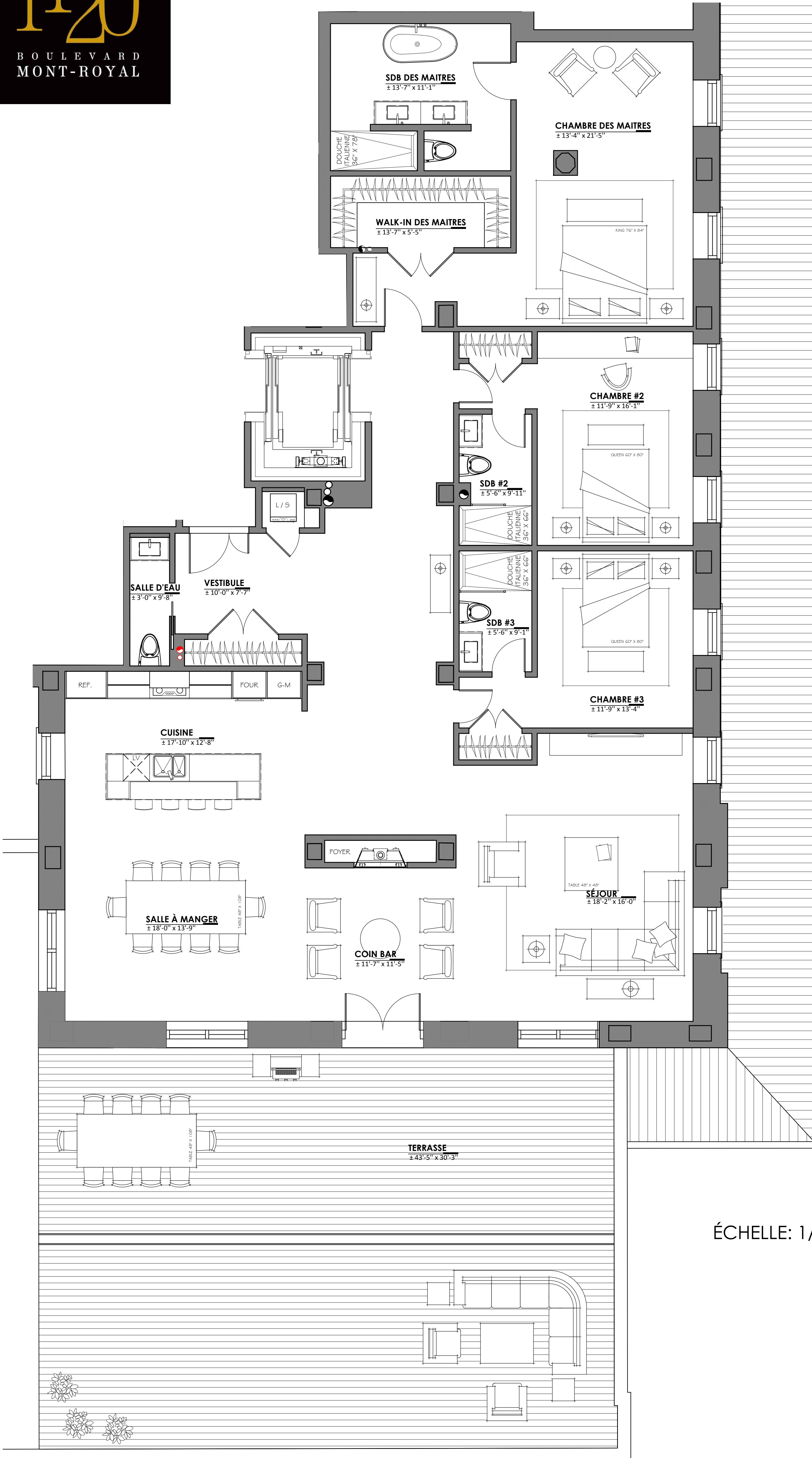


UNITÉ #668 PLAN D'AMÉNAGEMENT

3 CHAMBRES
SUPERFICIE: 3052 PI.CA.
TERRASSE: 1314 PI.CA.
GRAND TOTAL: 4366 PI.CA.

DATE: 2020-08-11



ÉCHELLE: 1/4" = 1'-0"

