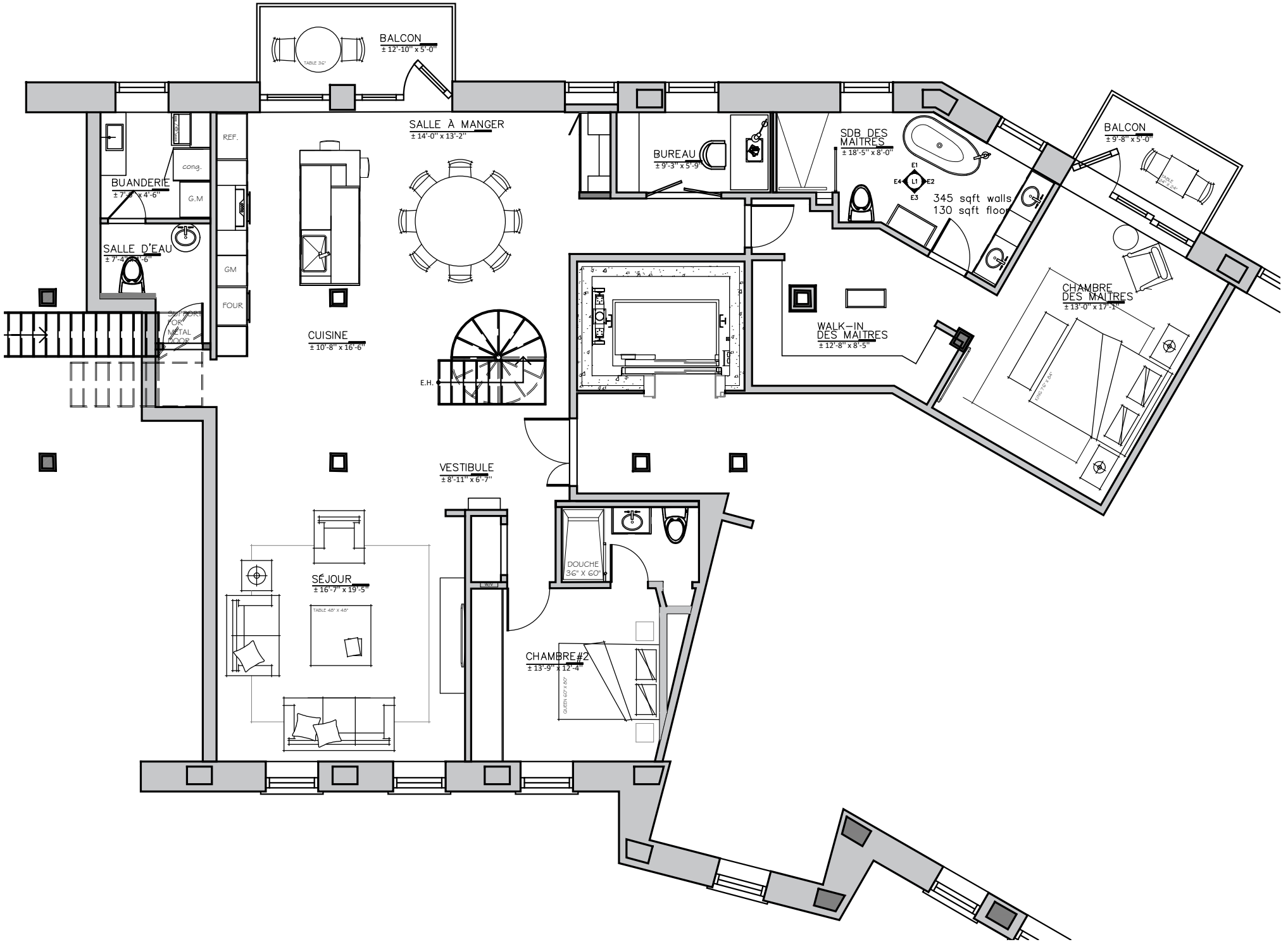


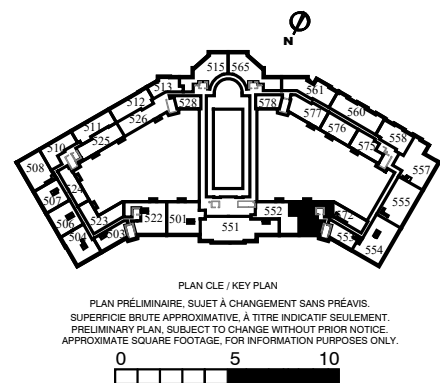
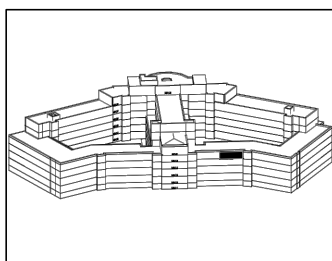
UNITÉ #570 PLAN D'AMÉNAGEMENT

2 CHAMBRES
SUPERFICIE: 2205 PI.CA.
APPENTIS: 100 PI.CA.
TOTAL: 2305 PI.CA.
TERRASSE: 726 PI.CA.
GRAND TOTAL: 3031 PI.CA.

DATE: 2020-07-28



ÉCHELLE: 1/8" = 1'-0"



A1