

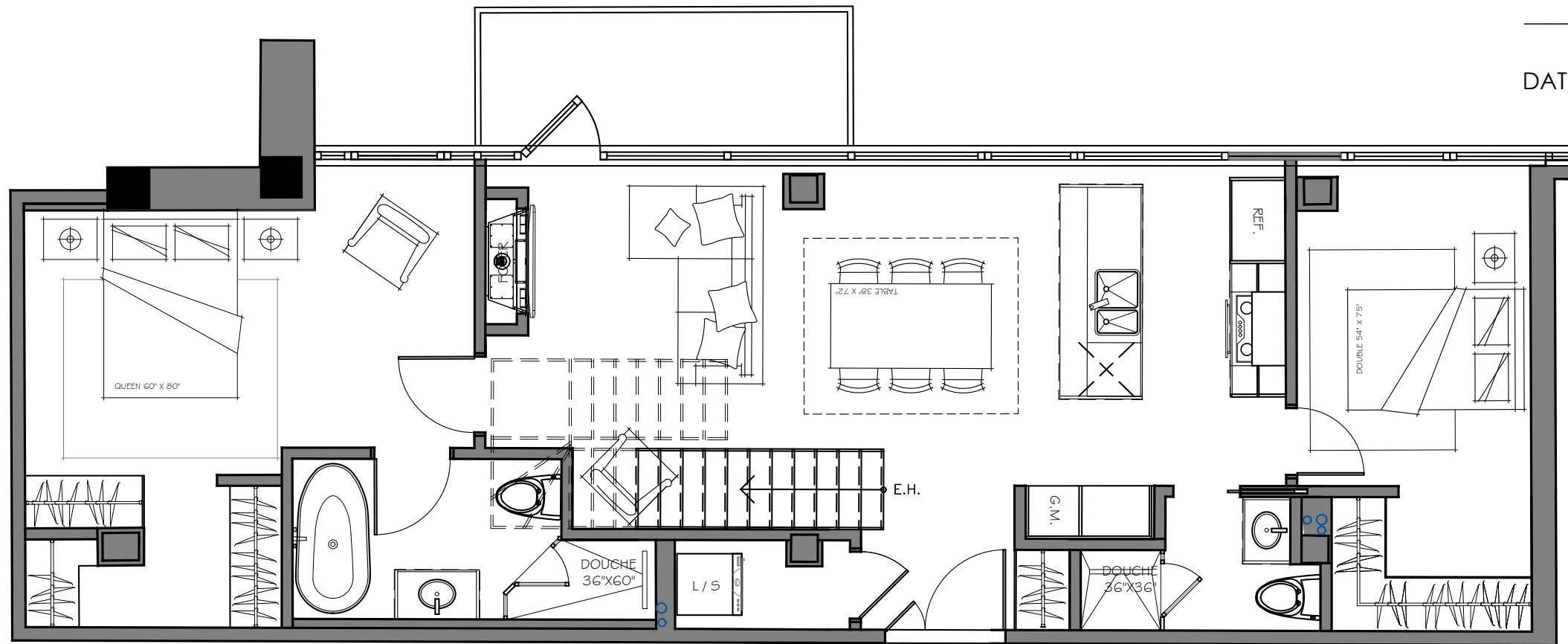


# UNITÉ #524

## PLAN AMÉNAGEMENT

2 CHAMBRES  
 SUPERFICIE: 1014 PI.CA.  
 APPENTIS: 100 PI.CA.  
 TOTAL: 1114 PI.CA.  
 TERRASSE: 370 PI.CA.  
 GRAND-TOTAL: 1484 PI.CA.

DATE: 2020-06-11



ÉCHELLE: 3/16" = 1'-0"

